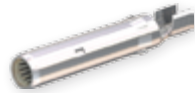
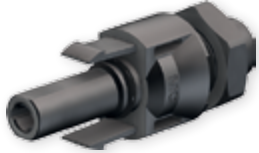


Aufbaudosenbuchse, -stecker MC4

**Aufbaudosenbuchsen und -stecker
als Einzelteil** (inklusive Isolierteil)

PV-ADBP4-S2...

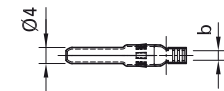
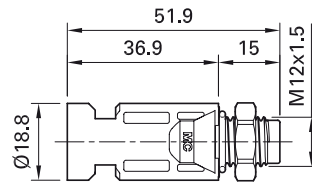
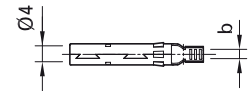
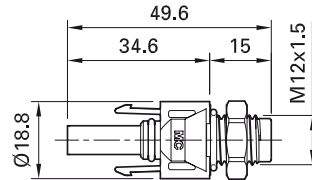


PV-ADSP4-S2...



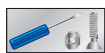
Female and male panel receptacle MC4

Female and male panel receptacles as individual part
(including insulating part)

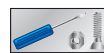


Technische Daten

Steckverbindersystem	Connector system	Ø 4mm
Bemessungsspannung	Rated voltage	1000V DC (IEC)
Bemessungsstrom IEC (90°C)	Rated current IEC (90°C)	17A (1,5mm ²) 22,5A (2,5mm ² ; 14AWG) 30A (4mm ² , 6mm ² ; 10AWG) 43A (10mm ²)
Bemessungsstrom IEC (85°C)	Rated current IEC (85°C)	39A (4mm ² ; 10AWG) 45A (6mm ² ; 10AWG)
Prüfspannung	Test voltage	6kV (50Hz, 1min.)
Umgebungstemperaturbereich	Ambient temperature range	-40°C...+90°C (IEC)
Obere Grenztemperatur	Upper limiting temperature	105°C (IEC)
Schutzart, gesteckt ungesteckt	Degree of protection, mated unmated	IP67 IP2X
Überspannungskat./Verschmutzungsgrad	Overvoltage category/Pollution degree	CATIII/3
Kontaktwiderstand der Steckverbinder	Contact resistance of plug connectors	0,35mΩ
Schutzklasse	Safety class	II
Kontaktsystem	Contact system	MC Kontaktlamellen MC Multilam
Anschlussart	Type of termination	Crimpen Crimping
Kontaktmaterial	Contact material	Kupfer, verzinkt Copper, tin plated
Isolationsmaterial	Insulation material	PC/PA
Verriegelungssystem	Locking system	Snap-in
Flammklasse	Flame class	UL94-V0
TÜV-Zertifiziert	TÜV certified	R60028286



Sicherungshülse Seite 53
Verschlusskappen Seite 55
Spezial Steckschlüssel-Einsatz Seite 60
Entriegelungsschlüssel Seite 61



Safety locking clip page 53
Sealing caps page 55
Special socket wrench insert page 60
Unlocking tool page 61



Montageanleitung **MA232**
www.multi-contact.com



Assembly Instructions **MA232**
www.multi-contact.com